

INTELLIGENT



INNOVATIVE
DESIGN



EASY
TO INSTALL



SMART
THINGS



Ditec DAS200 - DAS200HD - DAS200T

EN

Automation for sliding doors
Sliding to the future

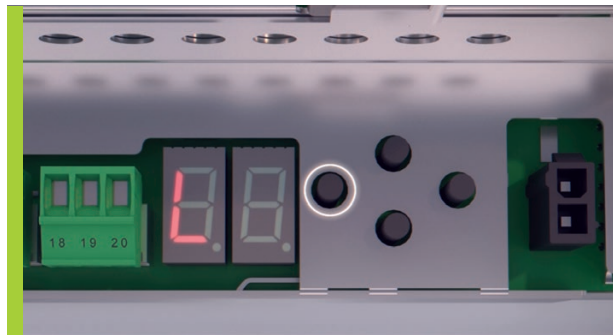
Ditec DAS200 | Smart and charming



Intelligent

The Ditec DAS operator is conceived to cater for all possible applications with **precision** and in **complete safety**

- **Smart start-up** mode with **self-acquisition function**, including automatic detection and recognition of:
 - Passage opening
 - Door weight
 - Presence and type of lock devices (standard and anti-panic)
 - Emergency and backup batteries
- Superior **energy efficiency** with a **switching power supply unit** offering a wide range of operating voltages
- **Digital programming** with over 90 parameters including **speed, timer, position** and **emergency function** parameters

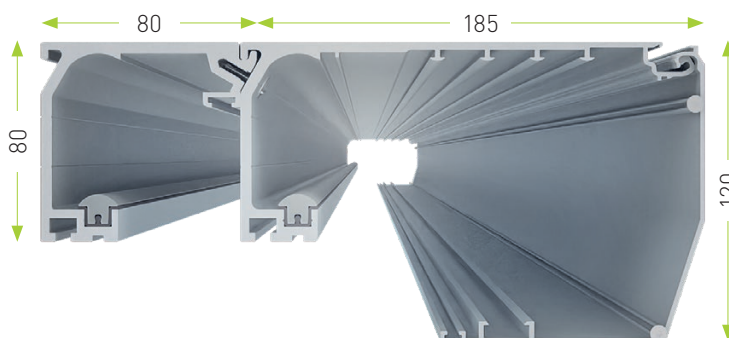
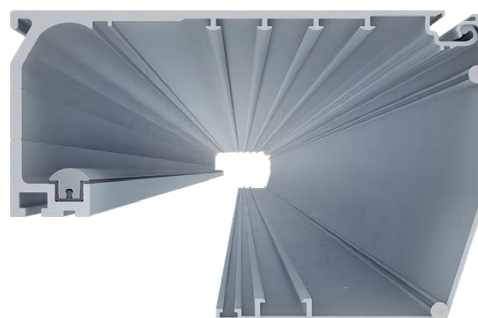


Innovative design



Ditec DAS is designed with the ambitious goal to be an **extremely elegant door system** but at the same time **modular** and **practical**

- The **arrow design** on the front creates a **distinctive identity** that is easily recognizable and gives the product a **slim** (120 mm height of cover) and elegant look
- The horizontally breakline creates a bold and **strong brand image**



The Ditec design is intended to **make customers' lives easier** and to **optimise stock** management and logistics

- Just **one casing** for all the operators of the DAS family
- A **practical, lightweight rear beam** only for **telescopic** application for a quick and safe installation, **reducing the complexity** of the stock
- The **same carriage unit** and door holder for all application (Ditec framed and glass panel doors, commercail doors)
- Steel lateral heads for a **secure mechanical connection**

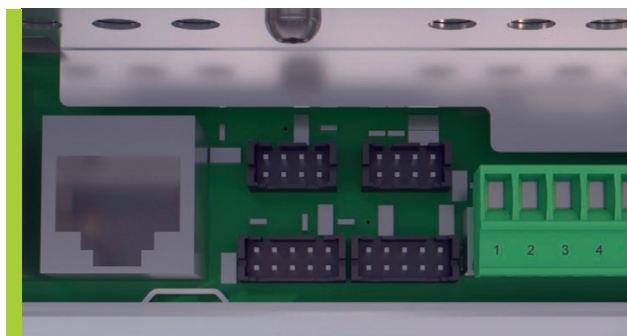
Ditec DAS200 | High tech, Easy way



Easy to install

A professional and extremely simple and quick to fit automation system which **significantly saves installation time**

- **FAST & SAFE** system to fix components to beam
- **Simple and easily accessible** mechanical adjustment of components such as the carriage, door holder, locking device and drive belt
- Dedicated **PLUG & PLAY** connectors for all main components, such as the power supply unit, electrical board and motor
- Dedicated **PLUG & PLAY** connectors for accessories such as batteries and **sensors** (both opening and safety sensors and safety sensors only)
- **EASY ACCESS** for installing and service action due to a **rotating mechanism** that allows the cover to be opened simply and quickly



Smart things

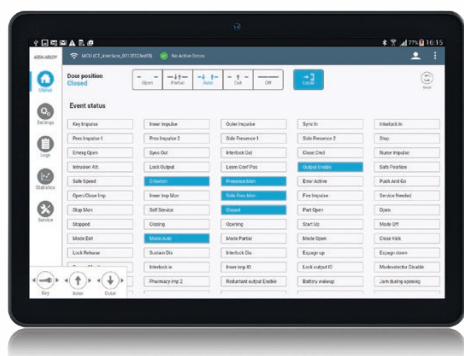
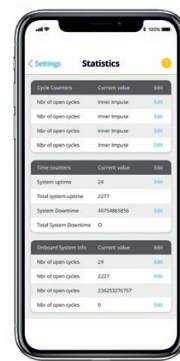
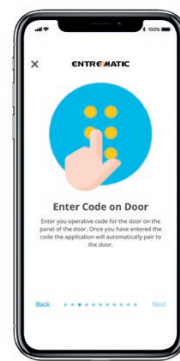
Ditec offers two different **App** based solutions - one of the **end user** and one for the **installer** - for a smart management and control of DAS automatic doors

ENTREMATIC DOOR CONNECT



Free App available on Play Store and App Store.
For use with latest generation Bluetooth-equipped COM501 and COM502 program selectors, offering the **end user** access to the following features:

- 5 functions, including **RESET**
- Download and send **events** and **statistics log**
- Download and send **error log**
- Add and manage **App users** (up to 7)
- Manage setting of **partial opening** and **timer-controlled automatic closing parameters**



SLIDER CONFIGURATION TOOL



An **advanced software (DAS900CT) for installers**, allowing the **complete configuration** and management of DAS200 doors from a tablet or handheld device (requires DAS900CTI interface).
This software offers the installer the following features:

- Usage of 5 controller functions, including **RESET**
- **Configure all parameters** of the control panel
- Download and upload **preset parameter configurations**
- Manage **events** and **errors log**
- Manage complete **statistics log**
- Manage and schedule **maintenance**



Designed for installers, optimized for customer experience

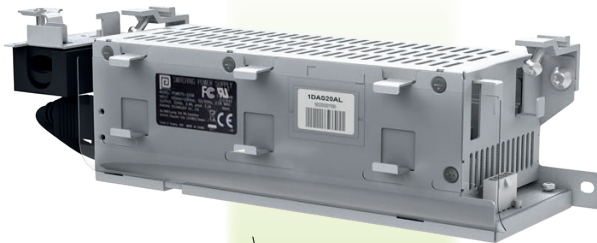
Sturdy
and elegant

Steel lateral head



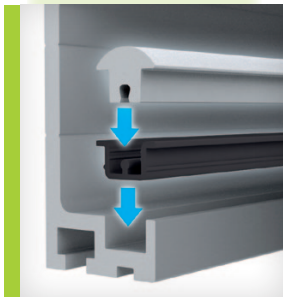
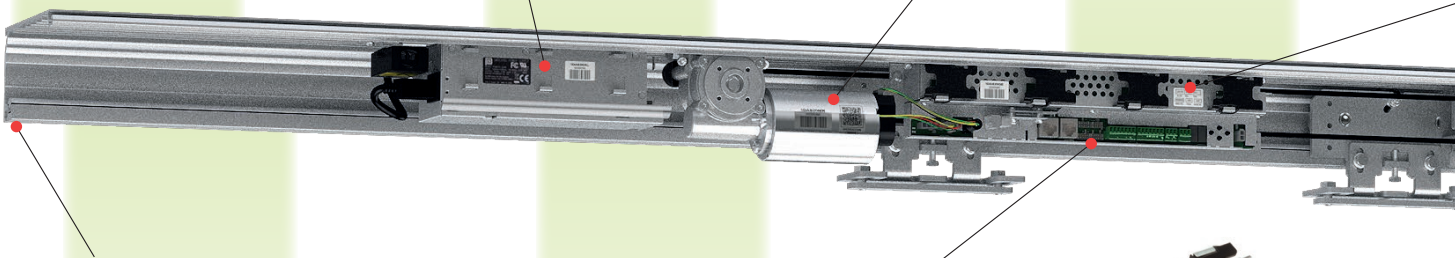
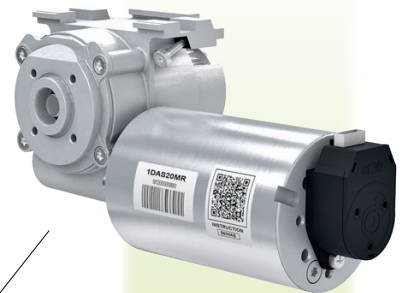
Energy
saving

Wide-range switching
power supply 100-240 V,
50/60 Hz unit available in
75 W and 150 W variants



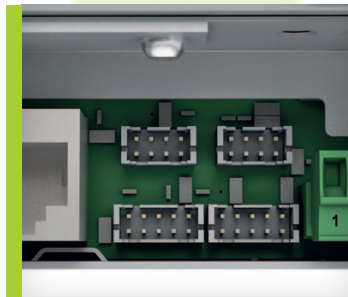
High-end
components

DUNKERMOTOREN™
ND and HD gearmotors with
built-in encoder



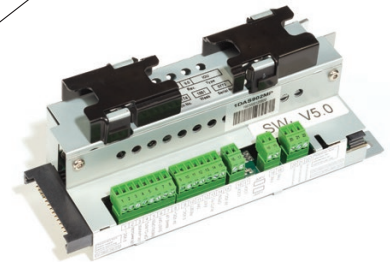
Anodized aluminum
track for carriage
with noise-dumping
seal

Silent



PLUG & PLAY
connectors for Ditec
range of sensors

Time-saving
& error free



PLUS MODULE

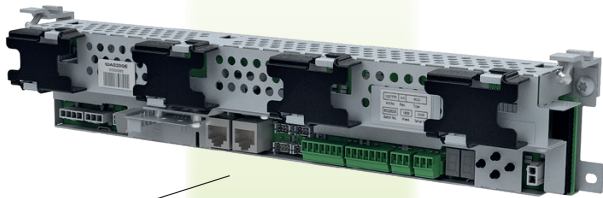
- "Nurse" impulse
- Opening impulse
- Closure impulse
- Fire alarm impulse
- Emergency open impulse
- Relay output

Wide range
of settings

Top quality in any detail

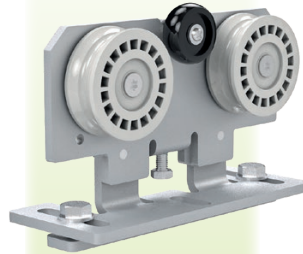
Digital & connected

Control panels with digital display and navigation menu with 4 buttons



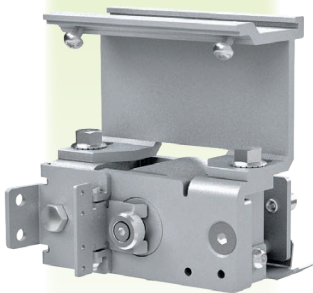
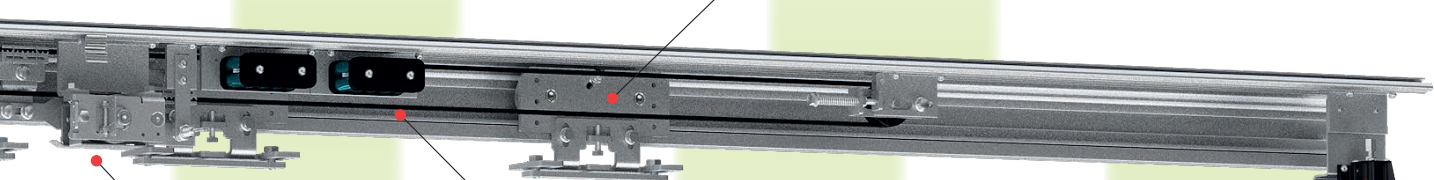
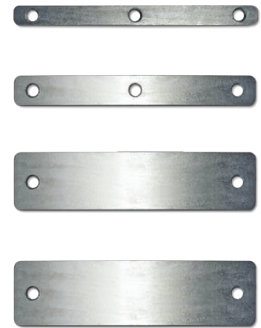
High performance and long lasting

Carriage with adjustable centre wheel (anti-derail device) and double ball bearing for each wheel



Stock reduction

Mounting plates for Ditec framed wing, Ditec glass wing and commercial wings



Standard, anti-panic and bistable door locking devices complete with brackets



Emergency 12 V and back-up 24 V batteries



Built-in release handle

All around applications

Safe

Elegant

Ditec DAS200

Superior performance

Ditec DAS200 is designed around the needs of convenience and safety of all customers, using the most advanced technologies and premium materials and components.

Because of that, it can also offer great performances in terms of clear passage opening, maximum weight of the wings, which can be mounted on DAS200, and opening and closing time performances.

FROM EXTRA-NARROW TO EXTRA-WIDE

With the DAS200 family of sliding door solutions, you can cover an extremely wide range of applications, including extremely narrow passages or ultra-wide openings:

- DAS200/DAS200HD from 715 mm to 3,240 mm
- DAS200T from 1,100 mm to 4,320 mm

HEAVY WEIGHT CHAMPION

DAS200 allows you to choose conveniently among a variety of frames systems and offers different performance levels in terms of wings weight; this means the new operator can easily match all applications:

- DAS200 up to 120 kg for 1 wing and 200 kg for 2 wings
- DAS200HD up to 150 kg for 1 wing and 280 kg for 2 wings
- DAS200T up to 240 kg for 1+1 wings and 320 kg for 2+2 wings

AS FAST AND QUIET AS YOU NEED IT

DAS200 control unit comes with an innovative software, dynamically controlling all parameters to maximize the opening and closing performance for every door weight combination.

In practice, DAS200 features one of the fastest acceleration and deceleration ramps, which result in record opening time.

Thanks to its motion control, the adoption of a noise dumping seal and the perfectly even surface of the aluminum track for trolleys, DAS200 is a super-silent operator, perfect also for quiet environments and working places.



DAS200, A GREEN CHOICE



- **RoHS 2011/65/EU directive:** restriction of hazardous substances
- **1907/2006/EC REACH:** Registration, Evaluation, Authorisation and Restriction of Chemicals
- **Switching power supply unit** for lower energy consumption
- Packaging made with **sturdy** and **environmentally sustainable** compressed paper
- **QR Code** for downloading manuals simply and quickly



Ditec DAS200

New design, new accessories

COM501MKS

Mechanical program selector with key operation



COM501MHS

Mechanical program selector with handle operation



COM502ES

Electronic capacitive touch program selector with Bluetooth module



COM501ES

Electronic capacitive touch program selector with Bluetooth module and RJ45 plug for Configuration Tool



COM501ER

Electronic capacitive touch program selector and security key with Bluetooth module and RJ45 plug for Configuration Tool



DAS900CTI

Bluetooth interface for direct connection between the Control Panel and the Slider Configuration tool



DAS11M8

N° 4 fixing plates (n° 2 wings) for AC1356, PAM16 and PAM30



DAS18M8

N° 4 fixing plates (n° 2 wings) for AC4255 and AC4870



COM500ES

Digital electronic program selector



COM500ER

Digital electronic program selector with security key



DAS35M8

N° 4 fixing plates (n° 2 wings) for PAMH60



DAS40M8

N° 4 fixing plates (n° 2 wings) for ALU48



FULLY COMPLIANT WITH ALL EU DIRECTIVES AND STANDARDS



- 2006/42/EC - Machinery Directive
- 2014/30/EU - Electromagnetic Compatibility Directive
- 2011/65/EU - RoHS Restriction of Hazardous Substances
- 1907/2006/EC - REACH Registration, Evaluation, Authorisation and Restriction of Chemicals
- EN 16005 - Powered pedestrian door
- DIN 18650 - 1 and 2 - Powered pedestrian door
- EN 60335 - 1 and 2 - Safety electrical appliances
- EN ISO 13849 - 1 - Safety of machinery

Technical specifications

	DAS200	DAS200HD	DAS200T
Description	automation for sliding doors	automation for sliding doors	automation for telescopic sliding doors
Max. wing weight	120 kg (1 wing) 200 kg (2 wings)	150 kg (1 wing) 280 kg (2 wings)	240 kg (1+1 wings) 320 kg (2+2 wings)
Clear passage	715 - 3215 mm (1 wing) 790 - 3240 mm (2 wings)	715 - 3215 mm (1 wing) 840 - 3240 mm (2 wings)	1103 - 4320 mm (1+1 wings) 1600 - 4320 mm (2+2 wings)
Product dimensions (HxWxL)	120 x 185 x L mm	120 x 185 x L mm	120 x 265 x L mm
Max. opening and closing speed (2 wings)	1.6 m/s	1.6 m/s	1.6 m/s
Power supply	110 V ~ /240 V ~ 50/60 Hz	110 V ~ /240 V ~ 50/60 Hz	110 V ~ /240 V ~ 50/60 Hz
Power supply rated power	75 W	150 W	150 W
Accessories power supply	24 V= /0.64 A	24 V= /1 A	24 V= /1 A
Protection rating	IP20	IP20	IP20
Approvals	TÜV	TÜV	TÜV
Control panel	1DAS20QE	1DAS20HDQE	1DAS20HDQE

Main functions

	DAS200	DAS200HD - DAS200T
Control panel	1DAS20QE	1DAS20HDQE
Power supply	110 V ~ /240 V ~ 50/60 Hz	110 V ~ /240 V ~ 50/60 Hz
Batteries	12 V or 24 V (optional)	12 V or 24 V (optional)
Hold force adjustment	■	■
Obstacle detection (stop while opening or reverse while closing)	■	■
Automatic passage opening width selection (depending on the flow of people)	■	■
Hold open time	0 - 60 s	0 - 60 s
Presence hold open time	0 - 60 s	0 - 60 s
Interlock function	■ (optional with DAS902MP)	■ (optional with DAS902MP)
Opening safety function (speed limiting)	■	■
Battery energy saving function in case of power failure	■	■
Emergency reverse with presence sensor	■ (compliant with EN 16005)	■ (compliant with EN 16005)
Safety test and safety monitoring function	■ (compliant with EN 16005)	■ (compliant with EN 16005)
Independent opening / closing commands	■ (optional with DAS902MP)	■ (optional with DAS902MP)
"Nurse" function	■ (optional with DAS902MP)	■ (optional with DAS902MP)
"Fire alarm" function	■ (optional with DAS902MP)	■ (optional with DAS902MP)
Emergency opening function	■ (optional with DAS902MP)	■ (optional with DAS902MP)



Cert. n. 0957/6

Entrematic Italy S.p.A.

Largo U. Boccioni, 1 • 21040 Origgio (VA) • Italy

Tel +39 02 963911 • Fax: +39 02 9650314

ditec@entrematic.com

www.ditecentrematic.com

Cod. P228B - 04/2020
Ditec DAS200
gdp milano 186465